

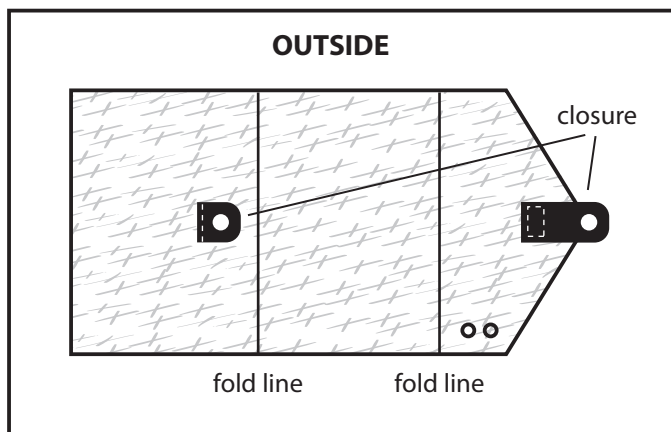
Card Holder/Needle Case

Contents:

- 1 Felt Card Holder/Needle Case Base
- 2 Felt Pocket Pieces
- 1 Leather Finger Strap
- 1 Leather Tab Snap Closure

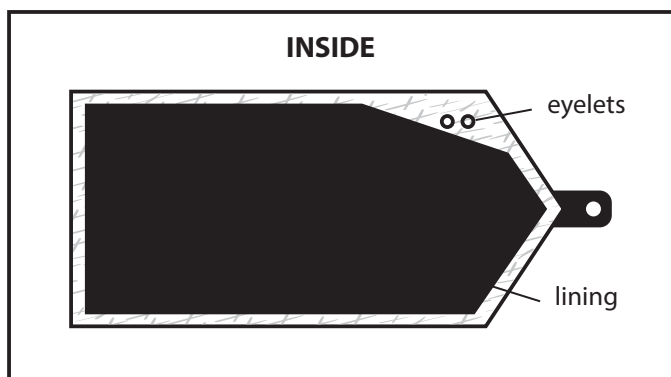
To Make:

1. Stitch the leather tab snap closure in place. Embellish as desired.

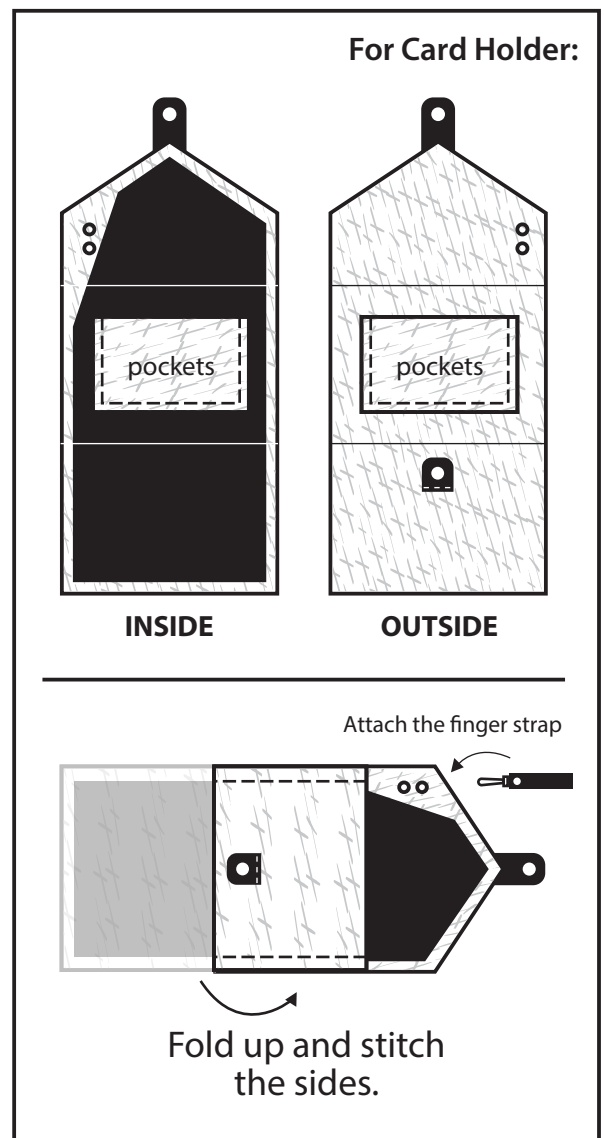
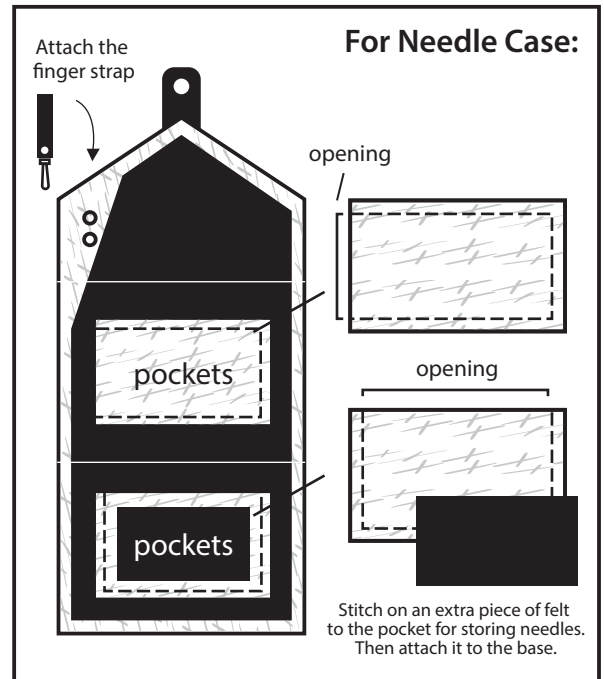


*Optional: lining

Cut lining the same size as the felt base.
 Turn under 1/4" and slip stitch in place.
 Take caution around the eyelets.



2. Stitch pockets in desired places.



Congratulations, your Aster & Anne project is complete!



Watch our instructional video
 on YouTube - asterandanne



Aster and Anne



www.asterandanne.com.au



info@asterandanne.com.au



info@asterandanne.com.au